

A'AMAL ENGINEERING & CONTRACTING CO.



Pre Qualification Document

Middle East Head Office
P.O. Box 4977, Alkhobar 31952
Kingdom Of Saudi Arabia
Tel: +966-13-897 3938
Fax: +966-13-865 3449
Email: info@aamal-group.com

Contents

- I. A'amal Engineering & Contracting Co. Capabilities
- II. Corporate Philosophy
- III. HSE Policy & Quality Policy
- IV. Facilities & Staff
- V. Our Equipments
- VI. Organization Charts & Standards
- VII. Project Experience List
- VIII. End Users & EPC'S

AECC Capabilities

❖ **E**NGINEERING / DESIGN

❖ **P**ROCUREMENT

❖ **C**ONSTRUCTION

- ❖ STRUCTURAL STEEL WORKS
- ❖ MECHANICAL WORKS
- ❖ PIPING PRE FABRICATION & ERECTION
 - AUTOMATIC WELDING
 - MOBILE FABRICATION
- ❖ PAINTING WORKS
- ❖ INSULATION WORKS
- ❖ FIRE PROOFING
- ❖ ELECTRICAL & INSTRUMENTATION
- ❖ SUB STATION

ENGINEERING & DESIGN CAPABILITIES

Cutting Edge Engineering Solutions for Conversion & Repair Projects

Our Engineering Design Office is staffed by a competent team of more than 100 Engineers and Designers from various engineering disciplines, with specialization in advanced engineering capabilities including Front-End Engineering Design, Basic Design, Interactive 3-Dimensional Modeling, Finite Element Analysis, HVAC, Piping and Electrical & Instrumentation Engineering. Supported by advanced design expertise

Engineering Services (Electrical and Instrumentation) :

System Design, Detailed Engineering, Procurement Assistance, Erection, Testing and Commissioning Assistance.

- Basic and Conceptual Engineering
- Engineering Specifications
- Bid Evaluation / Recommendations
- Post Contract Engineering / Review and Approval of Vendor Documents
- Electrical System Studies
- Conceptual Studies and detailed Engineering
- Electrical Schemes & Single Line Diagrams
- Sizing & Selection of Electrical Equipment
- Metering & Protection Schemes
- Plant Electrification
- Plant & Equipment Layout
- Main & Auxiliary Power Distribution
- Switchyards Layouts & Design
- Relay Co-ordination
- Detailed Design and Drawings
- Control System Architecture and overall control philosophy
- Protection & Interlock Schemes
- Basic and detailed engineering - master instruments lists, DCS I/O list etc.
- Technical Specifications for DCS, PLC, Field Instruments, Control Valves, Analyzers etc.
- Control room layout & control panel layouts
- Field instrument location plans, cable routing, cable schedules, installation drawings, loop - wiring drawings etc.

AUTOMATIV PIPE FABRICATION FACILITY

(Shop Size : 15,000 Square meter)

Engineering

Auto Cad drafting SPOOLGEN software
Complete drafting and detailing department

Pipe Spool Capabilities

Maximum O.D. 60"
Spool size: 40 ft. x 8 ft. x 8 ft.
Spool output: 25,000 inch dia per month

Welding Processes

SMAW, GTAW, GMAW, FCAW, SAW
1,000 amp subarcs
350 amp inverter power sources

Quality Control

As per International Standard , and Client Standards
ASME Code Stamps-"R" , "S", & "U"
Shop hydro-testing
Independent radiographic inspection on-site

Work Schedule

Day Shift- 6 Days/Week, 12 Hours/Day
Night Shift- (if required)

Execution & Delivery

Work numerous projects simultaneously on daily basis
Track each project from detailing through delivery
Guaranteed delivery dates

Shop Equipment

Five-ton full length running cranes
One-ton swing boom cranes

Pipe Cutting

Pantograph machines
Plasma cutting
Abrasive cutting

Roll Out

7,500 lb. positioners
3,000 lb. positioners
500 lb. positioners
20,000 lb. turn rolls
5,000 lb. turn rolls
5-ton turn rolls
Submerged arc welding

Material Handling & Shipping

All material handling as well as pick-up and delivery is executed with Performance Contractor personnel and equipment.

Material Storage

Significant storage space exists to insure all material is properly stored and maintained. Material storage is specifically managed to ensure quality control requirements are satisfied.

MOBILE PIPE FABRICATION FACILITY

(Shop Size : 12,000 Square meter)

Shop Equipment Cranes

Five-ton full length running cranes
One-ton swing boom cranes

Pipe Cutters

Pantograph machines
Plasma cutting
Abrasive cutting

Work Schedule

Day Shift- 7 Days/Week, 11 Hours/Day (Rotating 4-Day Shift)
Night Shift- 7 Nights/Week, 11 Hours/Night (Rotating 4-Night Shift)
Personnel Capabilities - 100 per shift

Welding

1,000 amp sub arcs
455 STT Lincoln welding machines

Roll-Out

7,500 lb. positioners
3,000 lb. positioners
500 lb. positioners
20,000 lb. turn rolls
5,000 lb. turn rolls

Pipe Spool Capabilities

Spool output: 22,000 inch dia per month
Bar code spool tracking

Execution & Delivery

Internal trucking
Loading ramp

Stress Relieve Oven

47' x 8' x 6'

Material Handling & Shipping

All material handling as well as pick-up and delivery is executed with Performance Contractor personnel and equipment.

Material Storage

Significant storage space exists to insure all material is properly stored and maintained. Material storage is specifically managed to ensure quality control requirements are satisfied.

Fifteen acres of pipe lay down area surrounding shop

Quality Control

Minimum Standard: B31.3 (Latest Edition)
National Board Inspection & ASME Code Stamps-"R" , "S", & "U"
Shop hydro-testing
Independent radiographic inspection on-site

Welding Processes

SMAW, GTAW, GMAW, FCAW, SAW
1,000 amp subarcs
350 amp inverter power sources

ELECTRICAL & INSTRUMENTATION

The company has a skilled team of developers. An in-depth knowledge of various technology areas enables us to provide end-to-end solutions and services. We maximize the benefits of our depth, diversity and delivery capability, ensuring adaptability to the client needs, and thus bringing out the most innovative solutions in every business and technology domain.

We deliver innovative business and technical solutions for our Clients. We help our clients to identify and implement leading practices and utilize systems based on consistent procedures. This enables clients to leverage technology solutions, provide better data for analysis and gain real operational efficiencies. This will work closely to map and analyze clients' business processes. Our best practices expertise and established services methodology ensure efficiency and effectiveness at each steps are:

- Initial planning
- Building, and
- User training

ELECTRICAL - Turnkey Contracts: Design/Engineering, Procurement, Installation & Commissioning (EPIC) of the following:

- 1. AC (LT) & DC Distribution Solutions
- Power Control Center (PCC) Panels
- Motor Control Center (MCC) Panels
- Control & Relay Panels (CRP)
- APFC Panels
- AMF Panels
- AC Distribution Boards
- DC Distribution Boards
- Lighting Distribution Boards (LDB)
- Field Junction Boxes
- Cable Trays
 - Electrostatic Precipitator MCC Panels
 - Soot Blower MCC Panels
 - Heater Control Panels
 - Soft Starter Panels
 - DC / AC Variable Frequency Drive Panels
 - Other Panels as per customer's specification

INSTRUMENTATION - Turnkey Contracts, Design / Engineering, Procurement, Installation & Commissioning (EPIC)

- Programmable Logic Controller (PLC) System Panels
- Distributed Control System (DCS) Panels
- Supervisory Control and Data Acquisition (SCADA) Systems
- Pneumatic, Electronic Instrument Control Panels
- Control Desk / Mimic Panels
- Field Junction Boxes
- Cable Trays
- Marshalling Cabinets
- Field Instruments including Control Valves and Analyzers

Calibration Services:

Field Calibration Services

Corporate Philosophy

A'AMAL Contracting to Provide our clients with the confidence that A'AMAL will deliver the level of service required to fulfill the client specification in a safe, timely and cost effective manner.

Our objective is to operate an effective with documented and controlled system within the group, which will elicit client satisfaction.

A'AMAL shall ensure all schedules are fully resourced with adequately trained and qualified personnel.

HSE Policy

The health, safety and welfare of employees are of the prime importance to the company, The responsibility for safety at work rest up on all sectors of management, and the company will ensure that this policy is pursued through the organization, The company will take all reasonably practicable precautions to ensure the health, safety and welfare at work of its employees by providing

- A safe working environment by the design, construction, operation and maintenance of all plant, equipment and facilities
- Safe system of work
- Adequate instruction, information, training and supervision
- Control of situation likely to cause damage to property and equipment
- Effective facilities for the treatment of injuries that occurs at work
- Effective Fire prevention and fire control procedure
- Adequate facilities for consultation between management and employee representative
- The making of such test, examinations, samples and records as are necessary to monitor the working environment

The company expects employees to conform to this policy and to comply with the relevant health and safety standards laid down by various statutory requirements The employees are also expected to exercise all reasonable care for their own health and safety that of others who may be affected by their acts of omissions

The Overall Responsibility for the health and safety and welfare of the company and its personnel vested in the company's General Manager, The construction Manager bears special responsibility for safety and acts as the General Manage Deputy

The company will give full packing to this policy.

Quality Policy

Our Policy is to deliver our services using competent, skilled, experienced environmental and safety conscious team leaders, Operatives and employees to the correct client on time, fulfill our contractual obligation, exceed our client/customer expectations by continuous improving our approach and standards

The Policy shall be communicated to all managers, supervisors, staff, team leaders operatives and employees as part of their induction, copies of the policies shall also be displayed within the company, the GM shall ensure that every one within the organization is conversant with the quality policy and objectives

This Policy shall be reviewed Periodically and at least annually by members of the board of directors in order to ensure that it is correct, suitable and relevant to the company's business activities.

Facilities & Staff

SI No	Position	Total
1	President	1
2	General Manager	1
3	Proposal/Tendering Manager	1
4	Project Control Manager	1
5	Operation Manager	1
6	Engineering Manager	1
7	Project Manager	5
8	Construction Manager	7
9	QHSE Manager	4
10	HR & Admin Manager	1
11	Estimation Engineer	8
12	Quantity Surveyor	7
13	Cost Control Engineer	5
14	Planning Engineer	5
15	Project Engineer (Mechanical,E&I)	12
16	QC Superintend	1
17	QA / QC Engineer (Mechanical)	2
18	QA / QC Engineer (Piping)	4
19	QA / QC Engineer (Electrical)	3
20	QA / QC Engineer (Instrumentation)	3
21	CAD Draftsmen	4
22	Safety Supervisor	4
23	Safety Officer	21
24	Material Administrator	4
25	TOTAL (INDIRECT MAN POWER)	83

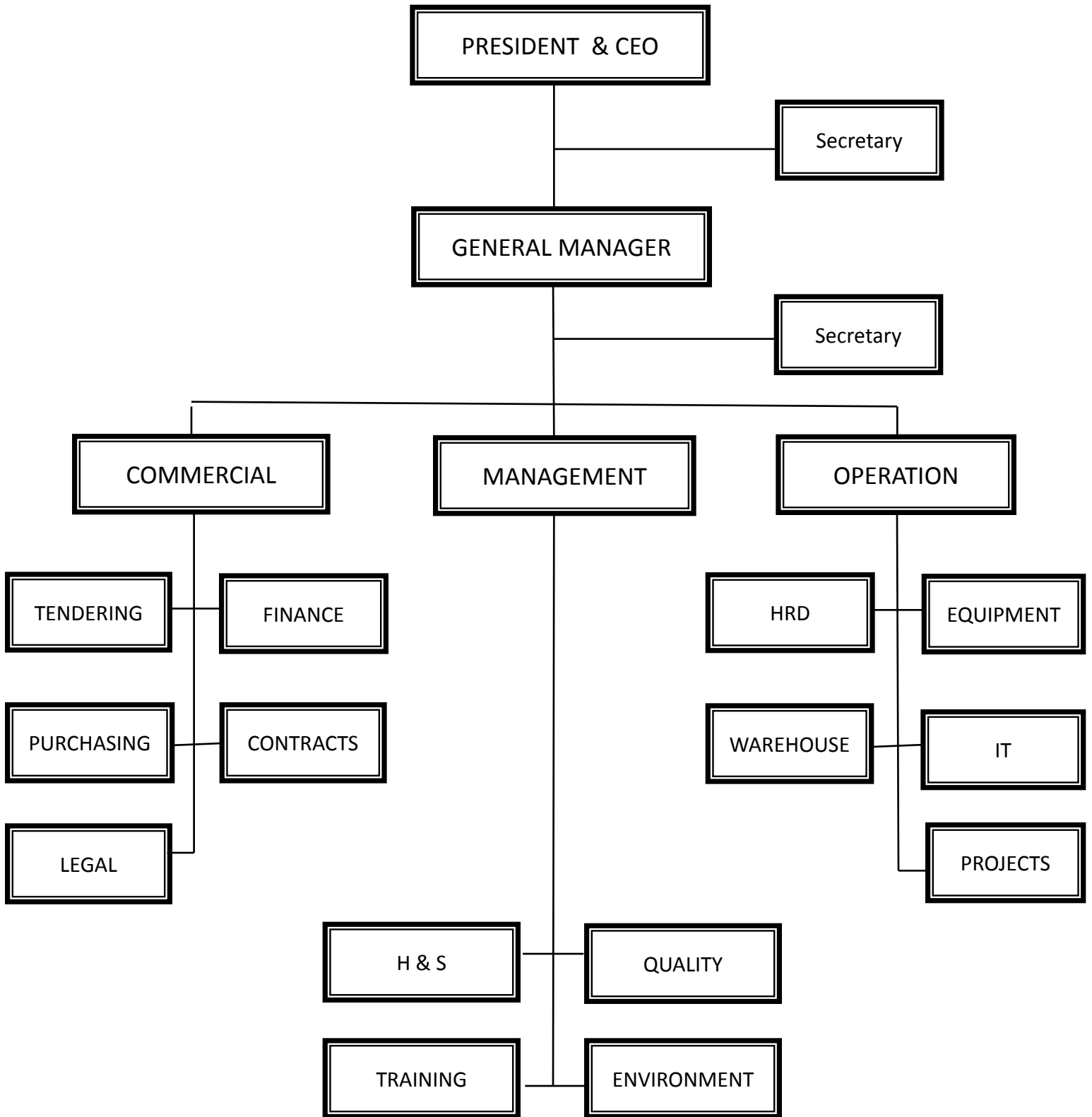
MAN POWER - DIRECT

SI No	Position	Total
1	Supervisor	08
2	Foremen	21
3	Welder Pipe Tig	58
4	Welder Arc	08
5	Pipe Fabricator	71
6	Mechanical Fitter	28
7	Millwright Technician	06
8	Structural Steel Erector	20
9	Painter	10
10	Blaster	08
11	Scaffolder	22
12	Hydro test Technician	08
13	Electrician	30
14	Instrument Technician	18
15	Instrument Tubing Technician	12
16	Mechanic / Auto Electrician	06
17	Mechanical Helper	60
18	Equipment Operator	06
19	Driver – heavy	08
20	Driver – Light	12
21	Scaffolder	24
22	TOTAL (DIRECT MAN POWER)	435
23	TOTAL (INDIRECT + DIRECT)	489

Our Equipments

SI No	EQUIPMENTS	Total
1	Crane Tadano 100 ton	02
2	Crane Tadano 70 ton	03
3	Crane Grove 50 ton	04
4	Fork Lift 10ton,7ton,3ton	08
5	Man Lift	07
6	Tele handler	04
7	Trailer 60Ft,40 Ft	03
8	Air Compressor	10
9	Generator Set 400kva,315 kva,240kva	07
10	Welding Machine Tig ,Electric, Diesel	42
11	Painting & Blasting equipment	06
12	Pipe Cutting M/s	18

Organization Chart - Management



Project References



Electrical and Instrumentation Project Experience List

S/N	PROJECT DESCRIPTION	TYPE OF PROJECT	CLIENT	END USER	LOCATION
1	Fluorine Complex	Sulfur Plant	Aljaber Energy Services	Gulf Fluorine	Abu Dhabi, UAE
2	40MW HFO based DG Power Plant	Power Plant	Neilan International	ASSEC Cement Plant	Altakomal, Sudan
3	Engineering, Erection, and Electrical Instrumentation	STBLOP – Spent Lube Oil Refinery Project	Yokogawa Services Saudi Arabia	Saudi Technology Base Lube Oil Plant	Al Kharj, Riyadh, Saudi Arabia
4	2x3.625MW HFO based DG Power Plant	Power Plant	Neilan International	National Electricity Corp. of Sudan	Elgenena, Sudan
5	Effluent Treatment Plant	Water Treatment	Al Jaber Energy Services	BOURGE	Ruwais, Abudhabi
6	6 MTY Steel Pelletization Plant, GIIC	Steel Plant	Al Moyad E&I Services	GIIC	Bahrain
7	Off-shore Wellhead Platform modification & up gradation of Multi phase Pumping station	Off-Shore Oil & Gas	Gulf Oil Gas Company	ZADCO	Abu Dhabi, UAE
8	190MW Combined Cycle Power Plant	Power Plant	Ranhill Powertron	Sabha Electricity Sdn., Bhd.	Sabah, Malaysia
9	Melut basin oil development project Field Processing Facility	On-Shore Oil & Gas	Ranhill Petroneeds	Petrodar Oil Operating Co.	Polouge, Sudan
150	Melut basin oil development project Central Processing Facility	Onshore Oil & Gas	Ranhill Petroneeds	Petrodar Oil Operating Co.	Jabalayn, Sudan

Riyadh NRW Project

Location: Riyadh, Saudi Arabia
Client: National Water
Company
Scope of Works: Leakage Reduction
Project Value: USD 18 million

Medina Operational Audit

Location: Medina, Saudi Arabia
Client: National Water
Scope of Works: Full operational audit
for water & waste water.
Project Value: USD 2.4 million

MLNG - Tiga Pipeline Project

Location: Bintulu, Sarawak
Client: Petronas Carigali Sdn
Bhd
Scope of Works:

- Construction & Installation of 50" finger and header
- EPC of Water Treatment Unit and Storage Tank
- Spill over Line 26" Spill over Line 2 100% screen type condensate filters
- Fabrication, Erection of Steel Structure, Civil Works and Commissioning of the plant.

Project Value: USD 54 million



Tuaran Combined Cycle Power Plant

Location: Sabah, Malaysia
Client: Ranhill Power Bhd

Scope of Works:

- EPC of Electricity Generating Facility with a minimum net capacity of 190 MW to be located at Kota Kinabalu Industrial Park, Sepangar Bay, Kota Kinabalu, Sabah,

Project Value: USD 153 million

Engineering Reference

Petrom SA Member of OMV Group Romania – ARPECHIM Refinery

- MTBE Plant
- C4 Selective Hydrogenation (diene hydrofination)
- Revamp of Visbreaking into SOAKER Visbreaking Unit
- FCC Revamp Metoxilation Unit (TAME Production)
- FCC Heavy Naphtha Hydrodesulphurization, ISAL UOP Process
- Hydrogen Plant
- Retrofitting of as existing Hydro treating Unit to ultra low Sulfur-Diesel Production (10ppm)
- Offsite Facilities for Hydrogen Plant and VGO Hydro treating Unit
- DCS Implementation for all process and Offsite Units

PETROM SA Member of OMV Group Romania – Petrobarzi Refinery

- Revamp of Atmospheric and Vacuum Distillation Unit
- Revamp of Fluid Catalytic Cracking Unit
- DCS and ESD Implementation for all Process and Offsite Plants
- TME Plants
- Implementation of Continuous Catalyst Regeneration for Catalytic Reforming Unit
- Revamp of Petroleum Product Rail Tanker Rack
- Revamp of Coke Cutting System
- As built for Tank Farm, and Utilities Selection using 3D scanning and PDS modeling

RETROM SA Member of OMV Group Romania

- Revamp of Petroleum Product Storages
- Revamp of Fuel Distribution Stations

Engineering Reference Continuation:

- **PETROTEL Lukoil Refinery**

- Revamp of Atmospheric and Vacuum Distillation Unit
- Revamp of Delayed Coking Unit
- FCC Naphtha Hydrodesulphurization Unit
- Revamp of Kerosene and Diesel Hydro treating Unit
- Revamp of Naphtha Hydro treating Unit
- Revamp of Kerosene and Gasoil Hydro Hydro fining
- Revamp of Catalytic Cracking Naphtha Hydro fining (HDS)
- Revamp of Fluid Catalytic Cracking Unit
- Revamp of C5-C6 Isomerization Unit and Gas Fractionation
- Revamp of Catalytic Reforming Unit
- Continuous Catalyst Regeneration for Catalytic Reforming Unit
- Sulfur Recovery Unit
- Hydrogen Plant
- Revamp of Amine Treating
- MTBE/ETEBE and TAME/TAEE Plant
- DCS and ESD Implementation for all Process and Offsite Plants
- Revamp of Flare Gas Recovery Unit
- LPG Storage – Loading Rack
- Reconstruction of Waste Water Treatment Unit and Cooling Water System
- Revamp of Energetic System
- Revamp of Fire Fighting System
- Administration Monitoring of Petroleum Product and Utilities, and Automation of Tank Farms

- **RAFO ONESTI Refinery**

- New MTBE/TAME Plant
- Increase of Catalyst Volume for Diesel, Kerosene, Gas Oil Hydro treating Units
- DCS Implementation for Ethers Plant

Engineering Reference Continuation:

- **Revamp of PETROMIDIA Refinery – ROMPETROL, Romania**
 - Mild Hydro Cracking Unit
 - Amine Unit
 - Hydrogen Plant
 - Coke Bricketing Unit
 - Sulfur Recovery Unit and Tail Gas
- **EXPUR SLOBOZIA**
 - Biodiesel Plant
- **ABB Germany**
 - Revamp of Delayed Coker Unit for Petrobrazi Refinery
- **Flour BV Netherlands**
 - Revamp Gas Oild Hydro trating Unit for Petrobrazi Refinery
- **UHDE Germany**
 - Catalytic Cracking Post treating Unit for Petrobrazi Refinery
- **MARTIFER Energia Portugal**
 - Engineering Services for Wind Towers in Babadag, Mihai Viteazu, Aghighiol
- **Foster Wheeler Italy**
 - Project Vision Light 2010 Petrobrazi Refinery
 - Engineering Services for Revamp of Atmospheric and Vacuum Distillation, Delayed Cooking
 - Amine Treating Unit
- **Man Ferrostal, Germany**
 - Hurenzani Gas Deliveries – Engineering Services

Engineering Reference Continuation:

- **Kurdistan Refinery Iraq**
 - Crude Distillation Unit
 - Naphta Hydro treating Unit
 - Distillate Hydro treating Unit (Diesel/Jet)
 - Catalytic Reform Unit
 - Isomerization Unit
 - Amine Unit
 - Sulfur Plant
 - Caustic Wash
 - Sour Water stripper Unit
 - Tail Gas Unit
 - Relevant Utilities and Offsite Facilities

- **DESMET Ballestra OLEO SPA, Italy**
 - Biodiesel Plant

- **DESMET Ballestra, Belgium**
 - Biodiesel Plant Holland

- **TATE&LYLE Process Technology, United Kingdom**
 - Sugar Plant in Egypt

Engineering Reference Continuation:

- **Jordan**
 - Aqaba South Petroleum Installation Project
 - Zarqa Refinery Extension to 2.5 millions t/y

- **Pakistan**
 - Karachi Refinery, 1.5 million t/y
 - Karachi Lube Oil Complex, 0.1 million t/y

- **Turkey**
 - Ballsh Lube Oil Complex. 30,000 t/y

- **Nigeria**
 - Demin Water Plant – Port Harcourt Refinery

- **Turkmenistan**
 - Sovetabad Gas Gathering and Purification , 60 million Ncm/day

Pipeline Project References

No.	Date Started	Date of Completion	Project Description	Project Location
1.	1997	2001	TRANSIT/TRANSMISSION LINES AND SLUG CATCHER	GC-27 & 28
2.	1997	2002	CONSTRUCTION OF FLOWLINES AND ASSOCIATED WORKS	WEST KUWAIT
3.	1997	2002	SHORE FEEDER PIPELINE	WEST KUWAIT
4.	2000	2002	24" SCREWED PIPELINE AND 32" CEMENT PIPELINE	MAA REFINERY
5.	2000	2002	CONSTRUCTION OF FUEL PIPELINE FROM MAA REFINERY TO NKB/NKBV/WKB.	MAA REFINERY
6.	2002	2003	NEW CRUDE EXPORT PIPELINE FROM NK TO CMM	MAA REFINERY-NK
7.	2002	2005	CONSTRUCTION OF 12" FUEL PIPELINE NKB/NKBV/WKB - III SEC.	NK-CMM
8.	2003	2003	NEW CRUDE EXPORT PIPELINE FROM NK TO CMM (VO# 1)	KOC
9.	2003	2005	CONSTRUCTION OF FLOWLINES AND ASSOCIATED WORKS IN WEST KUWAIT	NK-CMM
10.	2005	2010	REPLACEMENT OF 12 NOS. OFF-SITE PIPELINES IN OLD REFINERY AT MAA REFINERY	WEST KUWAIT
11.	2006	2008	PROCUREMENT, CONSTRUCTION & COMMISSIONING OF HEAVY FUEL OIL PIPELINES FROM MAA TO DWPS.	MAA REFINERY
12.	2006	2010	REPLACEMENT OF CRUDE TRANSIT LINE FROM GC-07 TO M/F TB-1	MAA REFINERY-DWPS
13.	2009	2009	PIPELINE REPAIR, REPLACEMENT, MODIFICATION AND CONSTRUCTION WORKS IN WEST KUWAIT AREAS	GC-7 TO MF TB-1
14.	2009	2013	FLOWLINES AND ASSOCIATED WORKS TO NEW GC-16 AND EXISTING FACILITIES AT WEST KUWAIT AREAS.	WEST KUWAIT
15.	2009	2013	CONSTRUCTION OF 40" GAS PIPELINE	WEST KUWAIT
16.	2009	2010	CONSTRUCTION OF PIPELINES AT BOOSTER STATION (BS-160)	KOC
17.	2009	2011	TRANSIT/TRANSMISSION LINES AND SLUG CATCHER	BS-160
18.	2010	2013	PART-B, PIPELINE WORK FOR THE INSTALLATION OF FG AND GAS OIL PIPELINES AND PUMPING STATION FROM MAA TO AZZOUR AND SHUAIBA POWER STATION	MAA, AZ-ZOUR, SHUAIBA
19.	2010	2013	PART-A, PIPELINE WORK FOR THE INSTALLATION OF LOW SULPHUR FUEL OIL, FG AND GAS OIL PIPELINE FROM MAA TO SABIYA AND DOHA FUEL OIL, FG AND GAS OIL PIPELINE FROM MAA TO SABIYA AND DOHA POWER STATION	MAA, SABIYA, DWPS
20.	2012	2013	PIPELINE CONSTRUCTION WORKS FOR WJO GAS FLARING REDUCTION WORKS	WAFRA

Storage Tank Project References

No.	Date Started	Date of Completion	Project Description	Project Location
1.	1992	1993	DEMOLITION, SUPPLY & CONSTRUCTION OF OIL & WATER STORAGE TANKS AT GC-15 (5 TANKS)	GC-15
2.	1992	1992	DESIGN, FABRICATION, SUPPLY, ERECTION, BANDWALL REINSTATEMENT AND CLEAN-UP WORK & TESTING OF TANKS	GC-23
3.	1992	1993	SUPPLY & CONSTRUCTION OF 2 WATER STORAGE TANKS	GC-23
4.	1992	1992	SUPPLY & CONSTRUCTION OF 2 FLOATING ROOF TANKS	SOUTH TANK FARM
5.	1993	1993	DESIGN & CONSTRUCTION OF EMERGENCY WATER TANKS	SHUAIBA REFINERY
6.	1995	1996	DESIGN, FABRICATION, SUPPLY, ERECTION & TESTING OF FIRE WATERTANKS	MEW
	1995	1997	DESIGN, FABRICATION, ERECTION & TESTING OF FIELD ERECTED STORAGE TANKS (6 NOS.)	GC-17
7.	1995	1997	PROCUREMENT, FABRICATION & ERECTION OF 24 TANKS AT KOC GC-27&28	MAA REFINERY
8.	1997	2001	TANK REPAIR, FIBRE GLASSING AND PAINTING WORKS AT ALL 3 REFINERIES	GC27 & 28
9.	1998	2002	REPLACEMENT OF TWO DRY CRUDE OIL TANKS AT GC-7 AND GC-3	MAA, MAB, SHUAIBA REFINERIES
10.	1999	2000	SUPPLY OF MANPOWER & EQUIPMENT FOR SURVEY AND REVAMP OF PRODUCTION FACILITIES.	GC-7 & 3
11.	1999	2000	GC-17 WATER HANDLING EXPANSION TO MINIMUM 70 MPWPD CAPACITY - PHASE II WEST KUWAIT.	VARIOUS GCS
12.	2000	2003	SUPPLY AND ERECTION OF SIX (6) TANKS FOR WATER INJECTION PLANT - MINAGISH, KUWAIT.	GC-17
13.	2000	2002	RE-BOTTOMING, PAINTING, CP SYSTEM, TESTING & CALIBRATION OF TANK-09	WEST KUWAIT
14.	2000	2001	SANDBLASTING/PAINTING OF 3 TANKS FOR KNPC NEW GOD PROJECT	KAFCO
15.	2000	2001	INSTALLATION OF (2) 100,000 BBLS FREE WATER KNOCKOUT PROCESS TANKS AT MGC	MAA REFINERY

Storage Tank Project References

No.	Date Started	Date of Completion	Project Description	Project Location
1.	2001	2006	MAINTENANCE SERVICES FOR PRODUCTION FACILITIES FOR SOUTH AND EAST KUWAIT AREAS	SOUTH EAST
2.	2001	2004	PROVISION FOR NEW DUAL CRUDE OIL TANKS AT GC-1, GC-7 AND NEW DRY CRUDE OIL TANK AT GC-4.	KUWAIT
3.	2003	2008	PD-STANDBY SERVICE CONTRACT FOR PROCUREMENT & CONSTRUCTION OF MECHANICAL PROJECTS WITH ASSOCIATED CIVIL, ELECTRICAL & INSTRUMENTATION WORKS.	GC-1, 4 & 7
4.	2003	2011	SUPPLY, INSTALLATION, OPERATION & MAINTENANCE OF SLUDGE HANDLING & TREATMENT FACILITY FOR KNPC REFINERIES.	KNPC
5.	2003	2006	WATER DISPOSAL PHASE III - DRAIN RECYCLING FACILITY	MAB REFINERY
6.	2004	2007	SUPPLY AND INSTALLATION OF 1 NO. (4.5 MMIG) FRESH WATER STORAGE TANK AND CONVERSION OF 2 NOS. EXISTING BRACKISH WATER TANKS AT SOUTH TANK FARM	WAFRA
7.	2004	2008	GC-27 NEW DESALTER & LIGHT CRUDE TRAIN MODIFICATION AND CAPACITY EXPANSION FOR EFFLUENT WATER SEPARATOR & TRANSFER AND MWIP UPGRADE.	SOUTH TANK FARM
8.	2004	2010	INSULATION WORKS IN THREE KNPC REFINERIES	GC-27
9.	2005	2010	MODIFICATION IN TANK VAPOUR SYSTEM CRUDE TANK FILLING PIPEWORK AND RECONSTRUCTION OF TANKS AT SEK GCS	MAA, MAB, SHUAIBA REFINERIES
10.	2005	2008	SUPPLY & CONSTRUCTION OF WET CRUDE STORAGE TANK 28-TN-0202	SOUTH EAST KUWAIT
11.	2006	2006	INSULATION, PAINTING AND FIRE PROOFING WORKS AT SHU REFINERY GR TA 2006	GC-28
12.	2006	2008	DESIGN, SUPPLY, FABRICATION AND INSTALLATION OF 8 FIELD ERECTED TANKS FOR OL2K PROJECT	SHUAIBA
13.	2007	2008	CONSTRUCTION OF MAKEUP WATER TANK FOR DWPS	SHUAIBA
14.	2007	2009	CONSTRUCTION OF FIELD ERECTED STORAGE TANKS	DOHA WEST
15.	2009	2010	CONSTRUCTION OF HEAVY AROMATIC STORAGE & SLOP TANKS.	WAFRA
16.	2009	2010	CONSTRUCTION OF FIRE WATER TANK FOR BOOSTER STATION (BS-160).	SHUAIBA
17.	2010	2011	INSTALLATION OF SITE FABRICATED TANKS	BS-160

Storage Tank Project References

No	Date Started	Date of Completion	Project Description	Project Location
1.	1998	2000	EOCENE SUBCENTER PHASE-I	WAFRA WAFRA
2.	2000	2002	UNDERGROUND DISTILLED WATER STORAGE SUMP AND PUMPING FACILITY	MAB REFINERY
3.	2000	2003	GC-17 WATER HANDLING EXPANSION TO MINIMUM 70 MPWPD CAPACITY- PHASE II WEST KUWAIT.	GC-17
4.	2001	2001	MECHANICAL DEMOLITION WORKS AT UNITS 4 & 5 FOR KNPC MAA REFINERY.	MAA REFINERY
5.	2001	2003	REPLACEMENT OF WASTE HEAT BOILER B-02-01 & B-02-51 INCLUDING ALL HP PIPING & ASSOCIATED WORKS	SHUAIBA
6.	2002	2003	CIVIL WORKS FOR REPLACEMENT OF CORRODED HYDROCARBON PIPING SECTIONS OF ALL(3) TRAINS OF GAS PLANT AT KNPC MAAPIPING SECTIONS OF ALL(3) TRAINS OF GAS PLANT AT KNPC MAA REFINERY.	MAA REFINERY
	2003	2008	PD-STANDBY SERVICE CONTRACT FOR PROCUREMENT & CONSTRUCTION OF MECHANICAL PROJECTS WITH ASSOCIATED CIVIL, ELECTRICAL & INSTRUMENTATION WORKS.	KNPC
7.	2003	2011	SUPPLY, INSTALLATION, OPERATION & MAINTENANCE OF SLUDGE HANDLING & TREATMENT FACILITY FOR KNPC REFINERIES.	MAB REFINERY
8.	2003	2006	WATERDISPOSAL PHASE III - DRAIN RECYCLING FACILITY	WAFRA
9.	2004	2008	GC-27 NEW DESALTER & LIGHT CRUDE TRAIN MODIFICATION AND CAPACITY EXPANSION FOR EFFLUENT WATER SEPARATOR & TRANSFER AND MWIP UPGRADE.	GC-27
10.	2005	2010	MODIFICATION IN TANK VAPOUR SYSTEM CRUDE TANK FILLING PIPEWORK AND RECONSTRUCTION OF TANKS AT SEK GCS	SOUTH EAST KUWAIT
11.	2005	2008	EPC OF HEATERS AND BOILERS SAFETY UPGRADATION AND EMISSION CONTROL PROJECT AT SHUAIBA REFINERY	SOUTH EAST
12.	2000	2002	CONSTRUCTION - POLYETHYLENE EXPANSION PROJECT	SHUAIBA
13.		2009	BUILDING WORKS FOR OL2K	SHUAIBA
14.	2007	2008	CIVIL AND BUILDING WORKS FOR IN-PLANT AREAS - PACKAGE A & MECHANICAL WORKS FOR IN-PLANT AREAS (REPLACEMENT OF 9 CRUDE OIL FILLING PIPELINES PROJECT)	SHUAIBA
15.	2007	2009	INSTALLATION OF PIPING & PIPE RACK FOR POWER BLOCK-A PACKAGE WORKS	KOC
16.	2010	2012	COMBUSTION SYSTEM IMPROVEMENT OF EIGHT (8) BOILERS AT AL-ZOUR SOUTH POWER STATION	SABIYA
17.	2011	2014	STRUCTURAL, MECHANICAL, PIPING (SMP-2) & PAINTING WORKS FOR NORTH LPG TANK FARM PROJECT AT MAA REFINERY	AZ ZOUR

Storage Tank Project References

No.	Date Started	Date of Completion	Project Description	Project Location
1.	2011	2011	STORAGE TANK FOR LSFO PIPELINE PROJECT (PART-B)	MAA, AZ-ZOUR, SHUAIBA
2.	2011	2012	CONSTRUCTION OF TANKS AND RELATED PAINTING AND CP SYSTEM AT BS-171, WEST KUWAIT	WEST KUWAIT-BS 171
3.	2011	2013	CONSTRUCTION OF GASOIL TANK AND AUXILIARY AT AL-ZOUR POWER STATION	MINA AL-ZOUR
4.	2012	2013	TANK ERECTION & CP WORKS FOR INSTALLATION OF LSFO PIPELINE FROM MAA TO DOHA SABIYA POWER STATIONS	LSFO PROJECT
5.	2012	2014	STORAGE TANKS FOR WARA PRESSURE MAINTENANCE PROJECT.	WPMP PROJECT

Fabrication Project References

No.	Date Started	Date of Completion	Project Description	Project Location
1.	2011	2012	CS PRESSURE VESSELS FOR NEW AGRP PROJECT IN MAA REFINERY	MAA REFINERY
2.	2012	2012	STRUCTURAL STEELWORK FOR VALVE PIT FOR LSFO - PART -B PIPELINE PROJECT	MAA, AL-ZOUR, SHUAIBA
3.	2012	2012	PIPING SPOOLS PREFABRICATION AND PAINTING WORKS - FOURTH GAS TRAIN (FGT) PROJECT AT KNPC MAA REFINERY TRAIN (FGT) PROJECT AT KNPC MAA REFINERY	MAA REFINERY
4.	2012	2012	SUPPLY OF NUT SHELL FILTER VESSEL FOR KOC-NEW GC-16 PROJECT	KOC-GC 16
5.	2012	2013	DESIGN, FABRICATION, COATING AND SUPPLY OF PRESSURE VESSELS (OIL & GAS SEPARATORS AND SCRUBBERS)	KOC GC's - 3,4,7,8 & 21
6.	2012	2013	STRUCTURAL STEEL FABRICATION FOR WARA PMP PROJECT	KOC
7.	2012	2013	STRUCTURAL STEEL FABRICATION FOR NORTH LPG TANK FARM PROJECT	MAA REFINERY
8.	2012	2012	DUPLEX STAINLESS STEEL PIPING FABRICATION FOR EWIP-I/SWIP-II PROJECT	NORTH KUWAIT
9.	2012	2012	SUPPLY OF PRESSURE VESSEL SUPPLY OF BIGGER STAGE	SHUAIBA
10.	2012	2012	SEPARATORS SUPPLY OF BIGGER STAGE SEPARATOR	SHUAIBA

Electrical and Instrumentation Project References

No.	Date Started	Date of Completion	Project Description	Project Location
1.	2010	2013	PART-B, PIPELINE WORK FOR THE INSTALLATION OF FG AND GAS OIL PIPELINES AND PUMPING STATION FROM MAA TO AZZOUR AND SHUAIBA POWER STATION	MAA, AZ-ZOUR,
2.	2010	2012	PART-A, PIPELINE WORK FOR THE INSTALLATION OF LOW SULFUR FUEL OIL, FG AND GAS OIL PIPELINE FROM MAA TO SABIYA AND DOHAPOWER STATION	MAA, SABIYA, DWPS
3.	2010	2011	SUPPLY AND INSTALLATION OF CATHODIC PROTECTION SYSTEM AT SHUAIBA OIL PIERSHUAIBA OIL PIER.	SHUAIBA
4.	2011	2012	DEGASSING VESSEL FOR JOINT OPERATIONS	WAFRA
5.	2011	2012	CONSTRUCTION OF MAIN INTAKE (20MW) NEW ELEVATED A-27 SUBSTATION	SOUTH EAST KUWAIT
6.	2011	2013	INSTALLATION OF MAIN EXTRACTION CONTROL VALVES -SABIYA POWER STATION	SABIYA POWER STATION
	2011	2017	OPERATIONS & MAINTENANCE OF SLUDGE HANDLING/TREAT FACILITY	MAB REFINERY
7.	2011	2014	COMBUSTION SYSTEM IMPROVEMENT OF EIGHT (8) BOILERS AT AL-ZOUR SOUTH POWER STATION	AZ ZOUR
8.	2011	2014	CONSTRUCTION OF TANKS AND RELATED PAINTING AND CP SYSTEM AT BS-171, WEST KUWAIT	WEST KUWAIT- BS-171
9.	2011	2012	INSTRUMENTATION WORKS OF UM-AL-AISH NEW LPG FILLING PLANT AT KOTC	UMM-AL-AISH LPG PLANT
10.	2011	2013	DESIGN, FABRICATION, COATING AND SUPPLY OF PRESSURE VESSELS (OIL & GAS SEPARATORS AND CRUBBERS)	KOC GC's - 3,4,7,8, &21
11.	2012	2013	VALVE PIT INSTRUMENTATION WORKS FOR LSFO PIPELINE PROJECT (PART-A)	LFSO (PART A)

End User's

